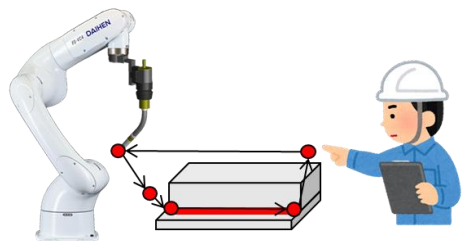




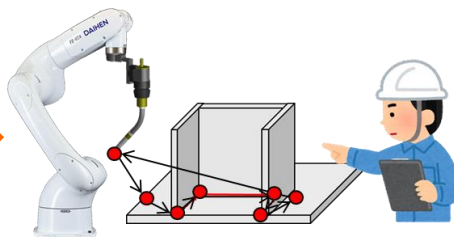
Robot Sees and Suggests Path Generation

Teaching-Less System

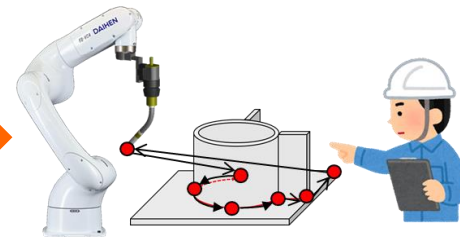
Teaching work occurs frequently, so it is time consuming.



Workpiece ① teaching operation



Workpiece ② teaching operation



Workpiece ③ teaching operation

Especially for small products, the teaching time is longer than the welding time.

DAIHEN 's teaching-less system can solve it!

Teaching work is completed by simply placing the workpiece and specifying the welding point!

Person

Operation 1 : Place the workpiece and press the operation start button.

Robot

◇ Robot recognizes workpiece and acquires data

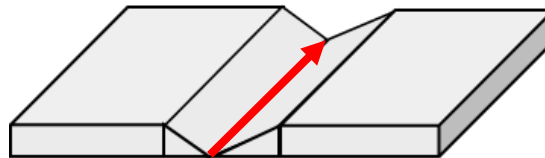
◇ Presents welding locations recognized by the robot based on acquired data

Person

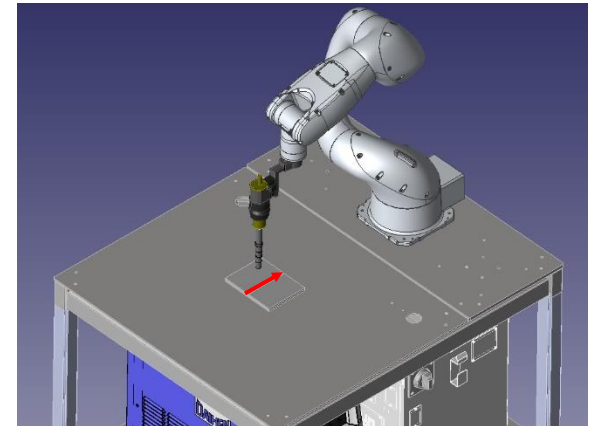
Operation 2 : Designate welding locations

Robot

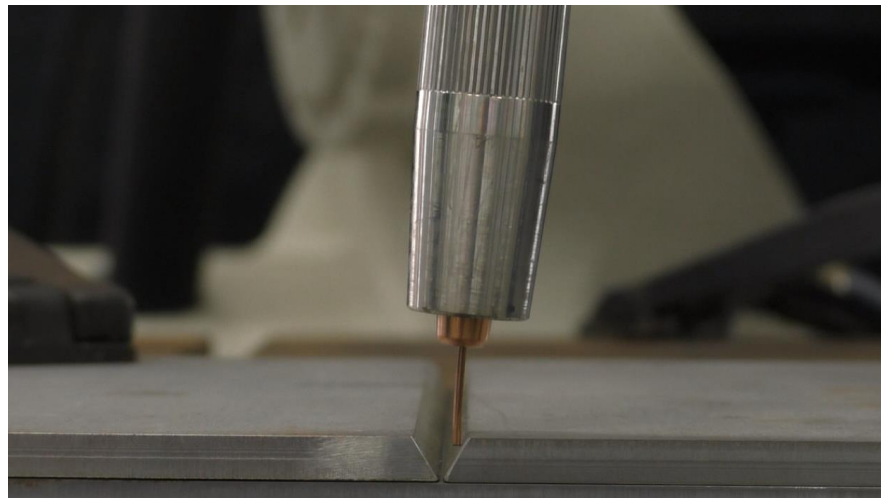
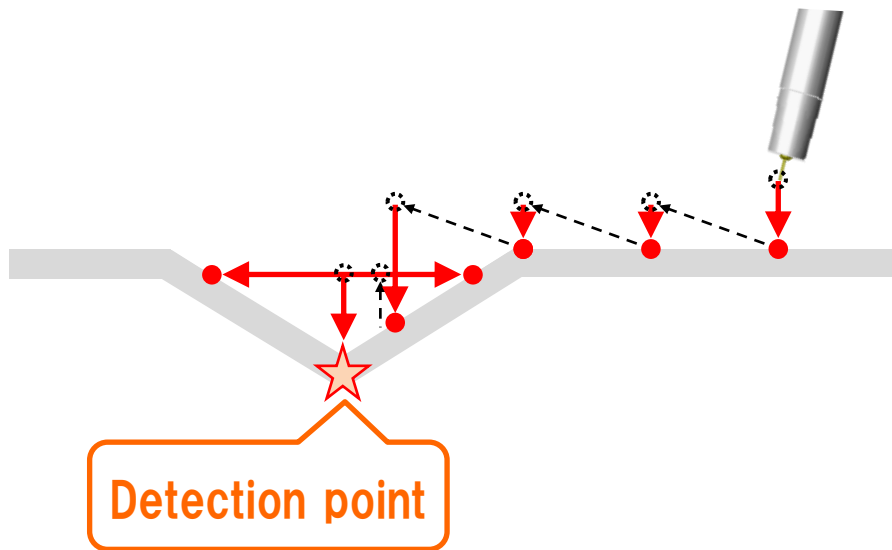
◇ Robot automatically generates movements



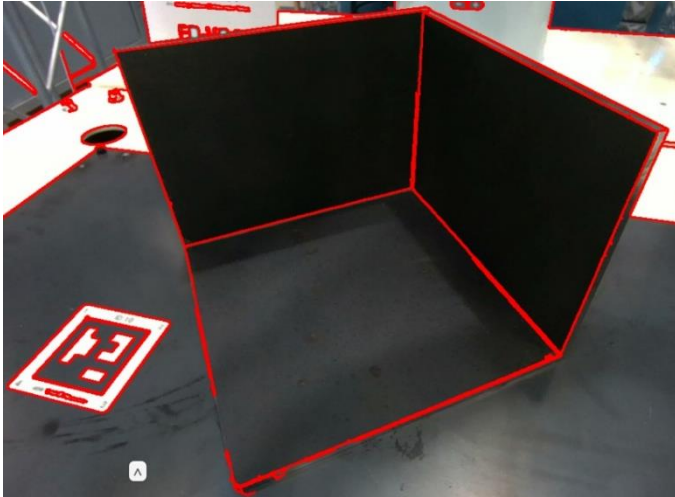
Welded workpiece (V-shaped groove)



Detection of groove by using a Sticking Search



Automatic recognition of weld line candidates from workpiece shape



Fillet joint



Lap joint

We can propose Daihen's teaching-less system for automation and productivity improvement in customer factories.

DAIHEN