



Ideal for thin plate welding of high tensile steel and
aluminum material

High-quality, ultra-low spatter welding system

DC Aluminum Welding

Maximum current UP

Maximum
300A

- Push Arc doubles the maximum current
- Significantly improved welding speed and applicable plate thickness.

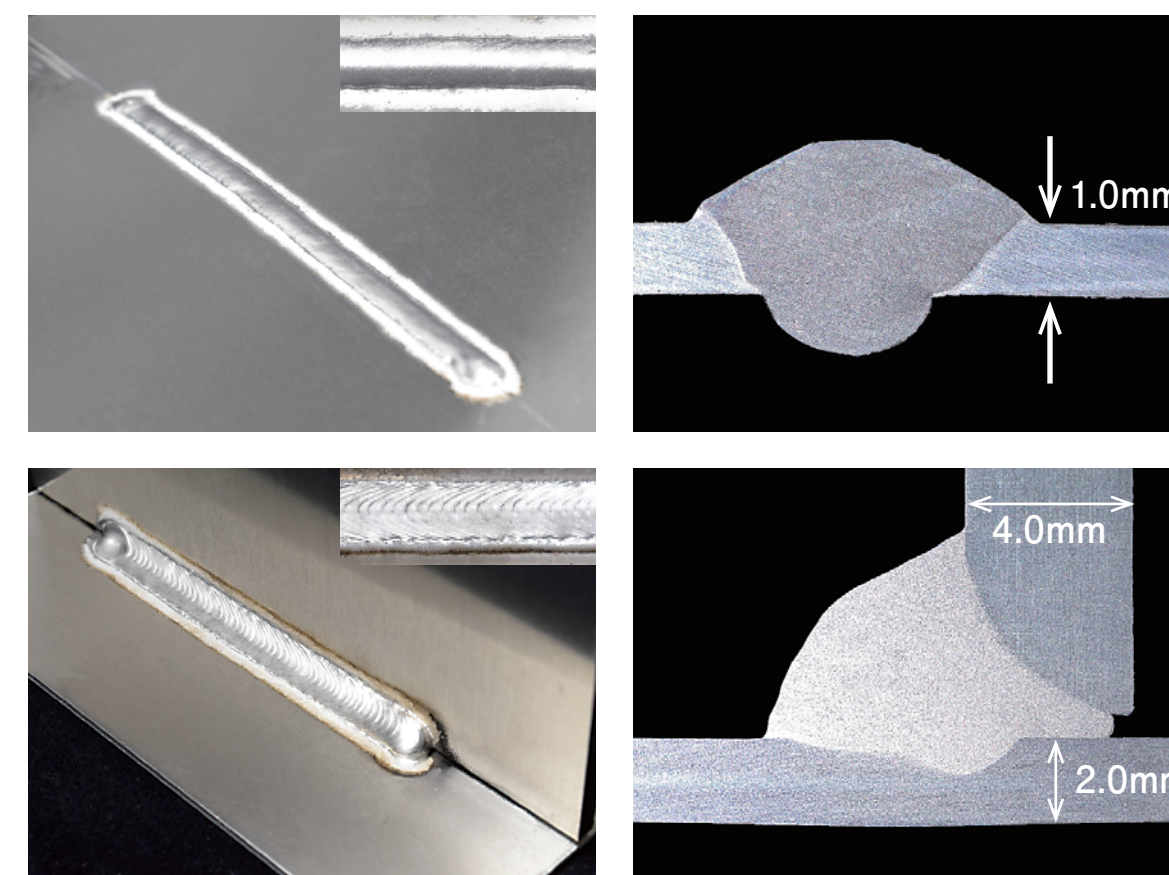
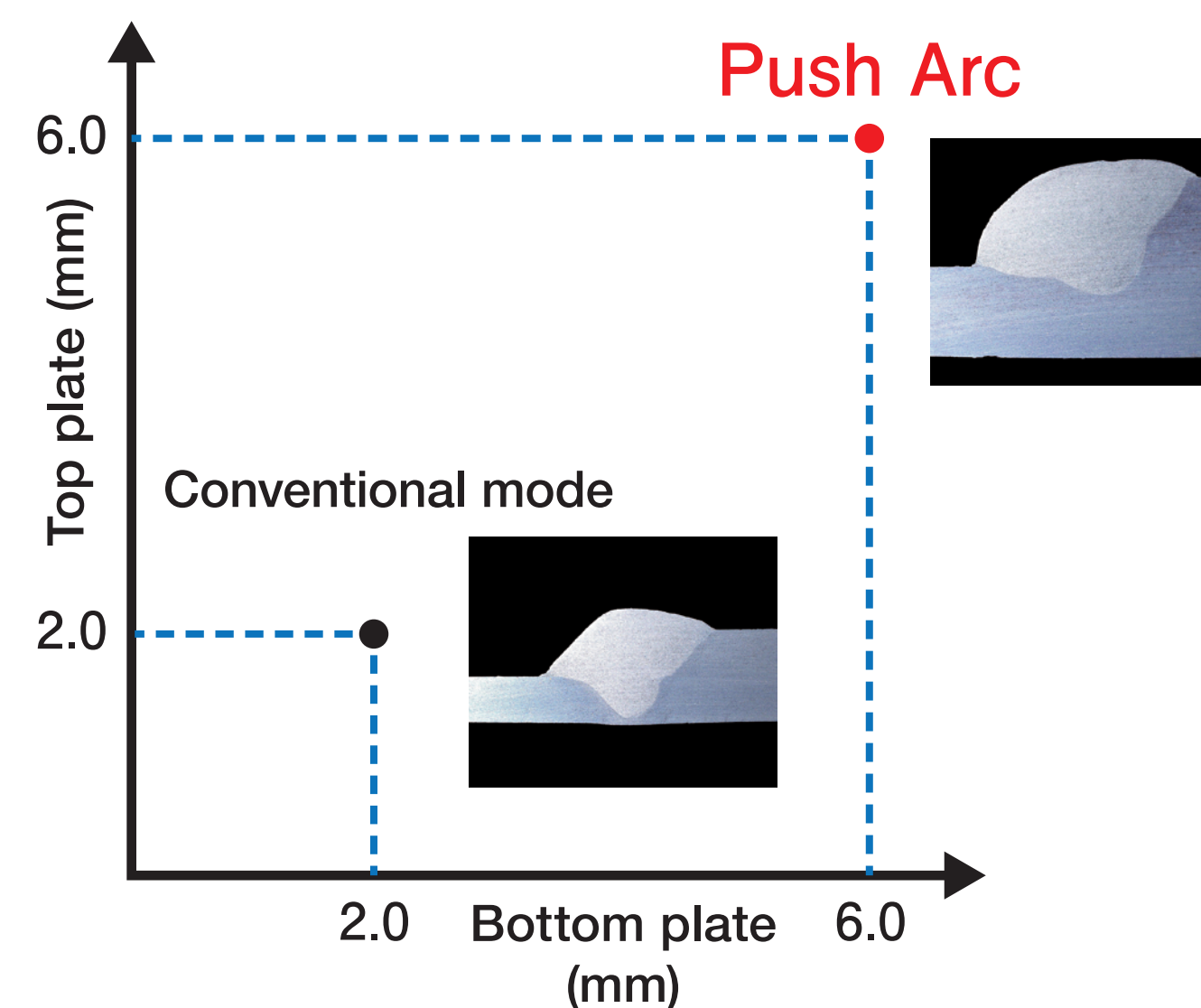
AC Aluminum Welding

Extremely low heat input

- Realizes welding of ultra-thin plates without melting down

High weldability expands gap margin

- Easy welding of different plate thicknesses and welds with gaps
- Expanded application range when combined with synchrofeed pulses



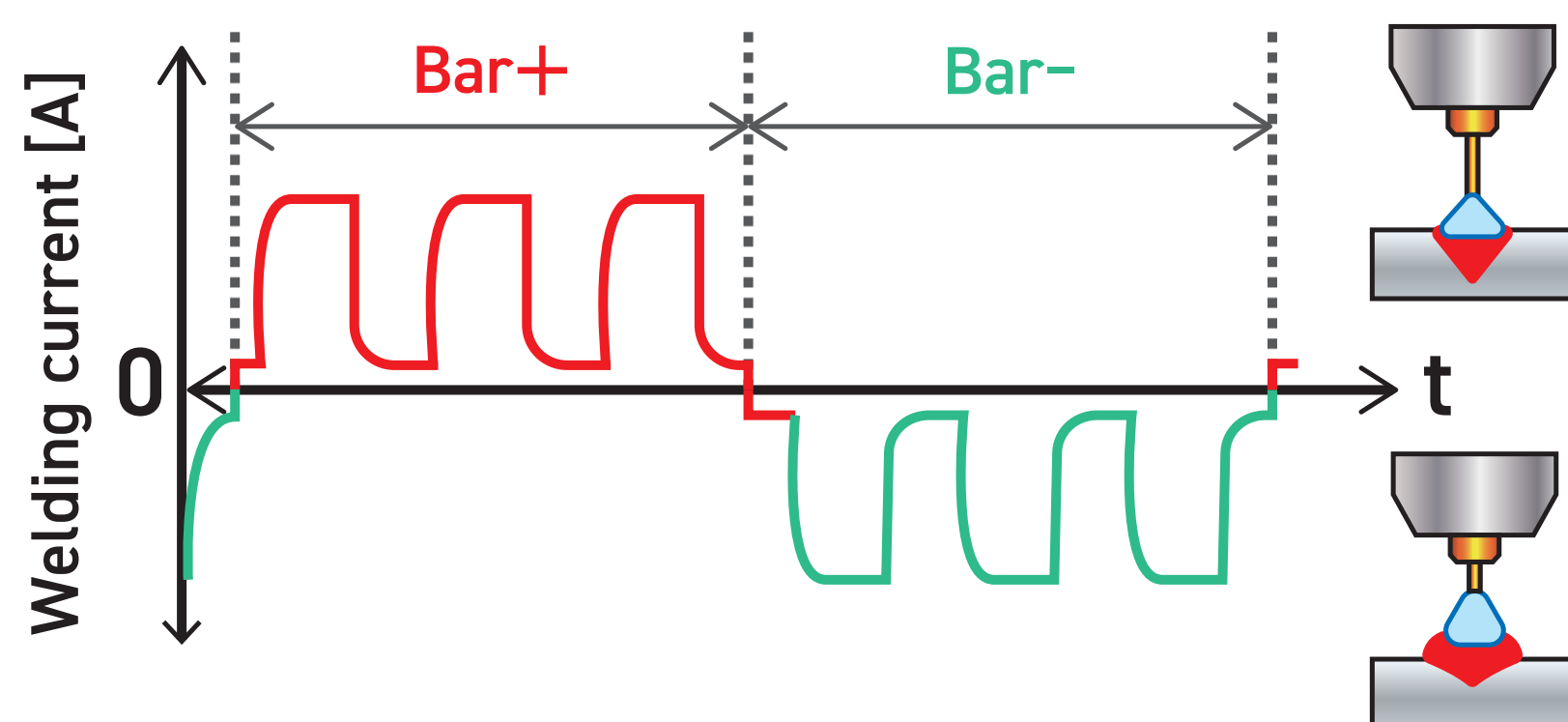
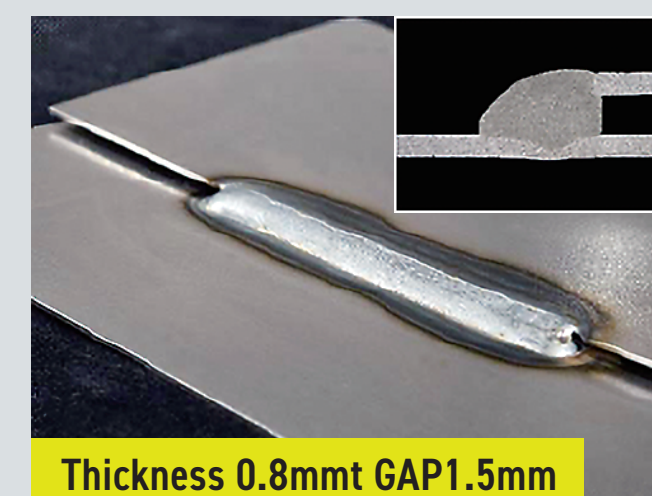
Cross-vertical synchronous feed welding method

Low heat input, high welding

- Capable of welding ultra-thin plates without melting down
- Easy welding even with gaps greater than the thickness of the plate

Fine-tuning of heat input and welding amount

- Fine-tune the duration of "bar+" and "bar-".
- Change the switching frequency to create the desired bead appearance.



Bar—	0%	50%	100%
cross-section view			
calorific value	La		S
Deposition	La		S